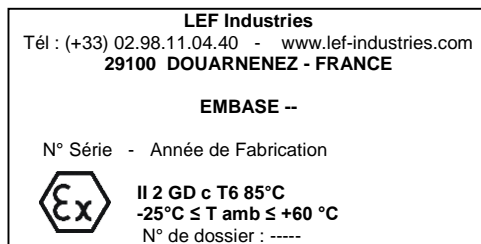


1 – REFERENCES :

European Directive 2014/34/UE
NF EN 13463-1, NF EN 13463-5

2 – MARKING :



3 - INSTRUCTIONS of USE:

Our equipments are suitable for a use in potentially explosive atmosphere with presence of gas or dust :

group II, category 2, G (zone 1) or D (zone 21),

in ambient temperatures ranging
between -25 °C and +60 °C

For its use in potentially explosive atmosphere, it is necessary to check that switchbox conforms to the area classification and to the ambient temperatures.

3.1 - Installation:

The installation must be carried out by qualified personnel.
- Check the state of the material (after storage)
- All additional drillings or modifications are proscribed.

3.2 - Use:

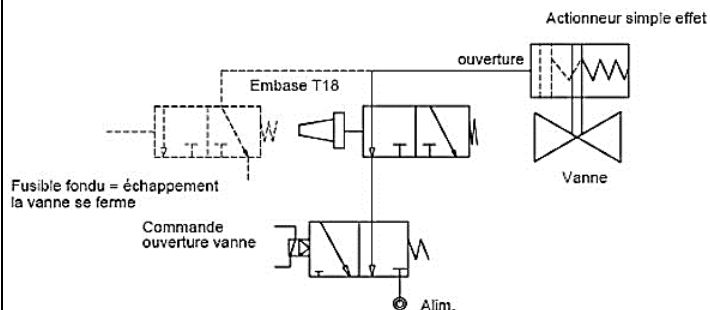
The standard material Base plate of connection is an interface between a distributor and a pneumatic actuator. Base plate 502 is an interface between an actuator 1/4 turn and a switch making it possible to transform the rotary movement of the actuator into linear movement.

3.3 - Assembly and disassembling:

➤ Base plate of connection T-- :

- ✓ Assembly :
 - Place the provided O-rings
 - Fix the base plate with the provided screws
- ✓ Connection:
 - Install the pneumatic connections
 - Connect

Schematic diagram of base plate T18, with eutectic fuse :



DO NOT DISMOUNT WHEN UNDER PRESSURE

➤ Base plate of connection 502 :

- ✓ Assembly to the switch box :
 - Place the provided O-rings
 - Fix the base plate with the provided screws
- ✓ Assembly to the actuator :
 - Place the unit switch box / base plate on the actuator
 - Align base plate shaft to actuator shaft and engage it
 - Attach the unit to actuator

➤ Ground connection :

The material must be connected to the ground, either directly or by the intermediary of the materials on which it is assembled.

3.4 - Maintenance:

This checking must be carried out at least once per year:

- External components and joins should not be damaged.
- Fixation screws must be properly attached.
- Lubrication of the moving parts must be checked and, if necessary, lubricant must be applied on these.
- Regular cleaning is required to prevent build-up of dust deposit.

3.5 – Repair:

If any part of the equipment explosion proof have to be repaired or changed, only the manufacturer is allowed to do it.

4 – PARAMETERS :

Maximum surface température : T6 → 85°C or T5 → 100°C

Maximum Compressed air Temperature : 40°C

Supply air must be dry and dust free.

5 –SAFETY REQUIREMENTS :

Check the ambient temperatures of use indicated on the box and respect them.

The equipment connected to the base plates of connections must be certified, according to the requirements of directive 2014/34/UE (ATEX). The lowest level of protection of the various equipments will define the level of protection of the unit and will have to be respected.